



RACING BRAKE PADS
FOR CERAMIC
COMPOSITE
DISCS

PERFORMANCE AND RACE COMPOUNDS
SPECIFICALLY ENGINEERED FOR
CERAMIC DISC APPLICATIONS

SLIGHTLY PROGRESSIVE IN-STOP
FRICTION BEHAVIOR

VERY GOOD MODULATION
AND CONTROLLABILITY

WIDE OPERATING
TEMPERATURE RANGE



LOW HEAT CONDUCTIVITY

EXCELLENT RELEASE CHARACTERISTICS

AVAILABLE RSC RACING BRAKE PAD COMPOUNDS

RSC 1

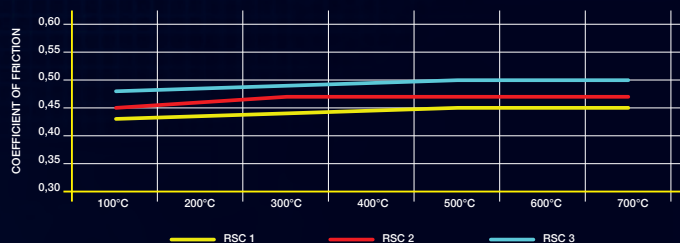
RSC 2

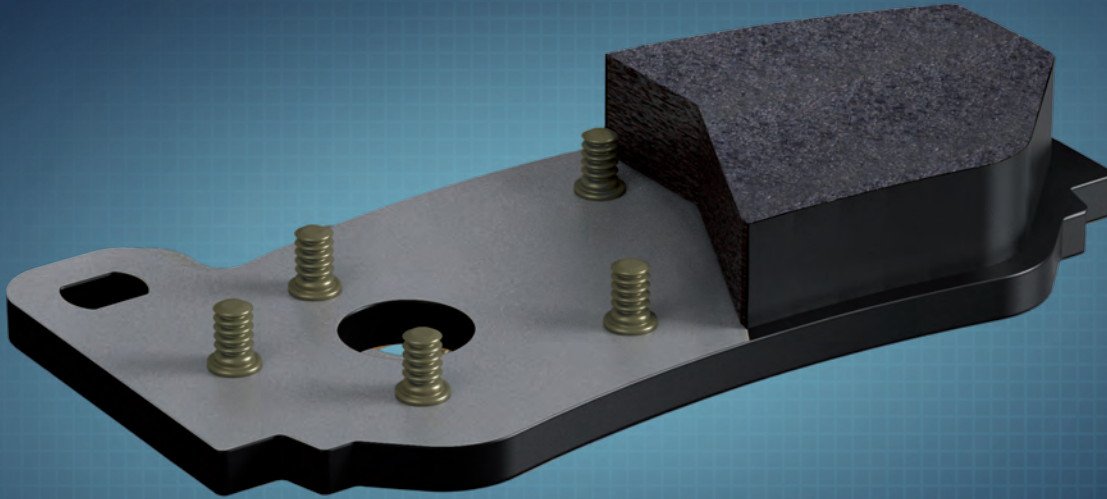
RSC 3

Amazing track day and club sport material for a wide application range of performance cars.

PAGID Racing RSC compounds are developed to comply with the latest requirements in ceramic composite brake disc technology and meet or surpass all current ecological standards in the automotive industry.

FRICTION vs. TEMPERATURE RSC



**PAGID RACING STEEL BACKING PLATE DESIGN**

PAGID Racing employs dual retention systems, with an adhesive bond and a patented mechanical system. The mechanical system consists of brass studs that are welded directly to the backplate to ensure a positive retention between pad compound and the backplate. These brass studs are softer than the brake disc (rotor) and wear away as the pad is consumed causing no damage to the disc.

+ UNIQUE AND PATENTED SYSTEM

+ FRICTION MATERIAL IS FIXED TO THE BACKPLATE

+ NO DELAMINATION FROM THE STEEL BACKING PLATE

+ HIGH TECH AND INNOVATION FOR YOUR VEHICLE



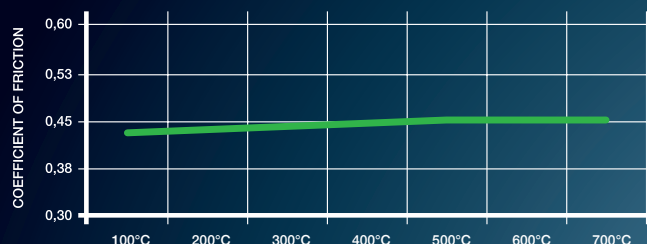
+ MEDIUM FRICTION COEFFICIENT

+ GOOD ALLROUND
PERFORMANCE CHARACTERISTICS

+ DISC FRIENDLY



FRICTION vs. TEMPERATURE RSC 1



APPLICATION RANGE

Race and track day compound for all known types of ceramic brake discs.

DESCRIPTION

RSC 1 is a low metallic resin bonded material containing steel and aramid fibers. This material features good all-round characteristics and is suitable for all types of usage.



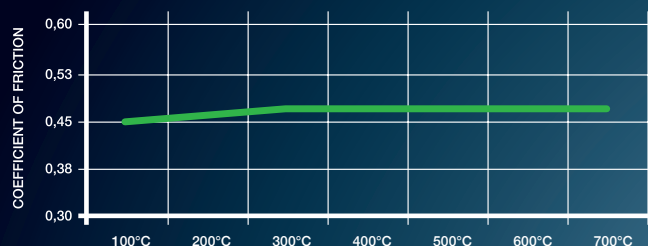
+ MEDIUM HIGH FRICTION COEFFICIENT

+ EXCELLENT FADE RESISTANCE

+ LONG PAD LIFE



FRICTION vs. TEMPERATURE RSC 2



APPLICATION RANGE

Special race compound for ceramic discs with a high content of fibers in the friction surface for sprint and endurance circuit racing.

DESCRIPTION

RSC 2 is a low metallic resin bonded material containing steel and aramid fibers. This material is specifically developed for above mentioned applications.





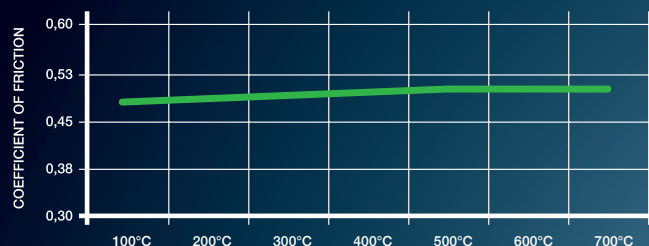
+ HIGH FRICTION COEFFICIENT

+ EXCELLENT FADE RESISTANCE

+ LONG PAD LIFE



FRICTION vs. TEMPERATURE RSC 3



APPLICATION RANGE

Special race compound for ceramic discs with low content of fibers in the friction surface for sprint and endurance circuit racing.

DESCRIPTION

RSC 3 is a low metallic resin bonded material containing steel fibers. This material is specifically developed for above mentioned applications.

FIND YOUR PAGID RACING BRAKE PRODUCTS

All the detailed information about
PAGID Racing Brake Products
can be found at
www.pagidracing.com
in the **SEARCH** section.



MAXIMUM PERFORMANCE

FOR EVERY PURPOSE



+ PAGID Racing Brake Products have been optimised for your individual requirements and provide the perfect solution for every purpose:

Endurance • Sprint • Formula
Track Days • Club Sport • Allround
Rally • Stock Car • Historic Cars

+ All over the world, numerous motorsport teams in the most varied racing categories successfully rely on PAGID Racing's quality and reliability.

The available specifications and possible applications can be found in our detailed **product search** at **www.pagidracing.com**.

Your PAGID Racing Dealer

EUROPE

TMD Performance GmbH
Lüschershofstr. 80
D-45356 Essen
Germany

USA

TMD Performance, SMLLC
1035 Crooks Road
Troy, MI 48084
USA

www.pagidracing.com